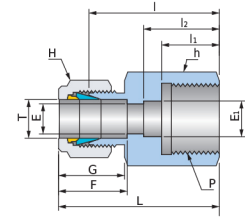
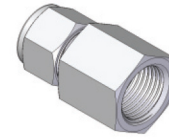


Gauge Connector

**UGC**



Connects Fractional Tube to ISO Parallel Thread (Gauge)

Part No.	Tube OD T		P (PF)	Dimensions (mm)											
	inch	mm		E Min.	E <sub>1</sub>	h		H		F	G	I	l <sub>1</sub>	l <sub>2</sub>	L
						inch	mm	inch	mm						
UGC-0402G	1/4	6.35	1/8	4.8	-	9/16	14.28	9/16	14.28	15.1	17.4	26.3	12.0	-	33.5
UGC-0404G	1/4	6.35	1/4	4.8	5.5	3/4	19.05	9/16	14.28	15.1	17.4	30.2	13.0	17.0	37.4
UGC-0406G	1/4	6.35	3/8	4.8	6.5	15/16	23.81	9/16	14.28	15.1	17.4	30.2	14.2	20.3	37.4
UGC-0408G	1/4	6.35	1/2	4.8	6.6	1-1/16	26.98	9/16	14.28	15.1	17.4	36.1	18.8	24.9	43.3
UGC-0504G	5/16	7.93	1/4	5.6	-	3/4	19.05	5/8	15.87	16.6	18.8	31.0	13.0	-	38.7
UGC-0508G	5/16	7.93	1/2	7.0	-	1-1/16	26.98	5/8	15.87	16.6	18.8	33.0	18.8	-	40.7
UGC-0604G	3/8	9.52	1/4	5.5	-	3/4	19.05	11/16	17.46	16.7	18.9	31.8	13.0	-	39.1
UGC-0606G	3/8	9.52	3/8	6.5	-	15/16	23.81	11/16	17.46	16.7	18.9	31.2	14.2	-	38.5
UGC-0608G	3/8	9.52	1/2	7.0	-	1-1/16	26.98	11/16	17.46	16.7	18.9	34.5	19.0	-	41.8
UGC-0804G	1/2	12.70	1/4	10.0	5.5	7/8	22.22	7/8	22.22	22.7	21.6	31.8	13.0	-	41.8
UGC-0806G	1/2	12.70	3/8	10.0	6.5	15/16	23.81	7/8	22.22	22.7	21.6	34.3	14.2	-	44.3
UGC-0808G	1/2	12.70	1/2	10.0	7.0	1-1/16	26.98	7/8	22.22	22.7	21.6	38.1	19.0	-	48.1

Connects Metric Tube to ISO Parallel Thread (Gauge)

Part No.	Tube OD T		P (PF)	Dimensions (mm)										
	mm	mm		E Min.	E <sub>1</sub>	h		H mm	F	G	I	l <sub>1</sub>	l <sub>2</sub>	L
						mm	mm							
UGC-M0304G	3	3	1/4	2.3	5.5	19.05	11.11	12.7	15.3	28.7	13.0	17.0	35.4	
UGC-M0604G	6	6	1/4	4.8	5.5	19.05	14.28	15.3	17.6	30.2	13.0	17.0	37.6	
UGC-M0606G	6	6	3/8	4.8	6.5	23.81	14.28	15.3	17.6	30.2	14.2	20.3	37.6	
UGC-M0608G	6	6	1/2	4.8	7.0	26.98	14.28	15.3	17.6	36.3	19.0	25.0	43.7	
UGC-M0804G	8	8	1/4	6.4	5.5	19.05	15.87	16.3	18.7	31.0	13.0	-	38.6	
UGC-M0808G	8	8	1/2	6.4	-	26.98	15.87	16.3	18.7	33.0	19.0	-	40.6	
UGC-M1004G	10	10	1/4	5.5	-	19.05	19.05	17.3	19.5	31.8	13.0	-	39.5	
UGC-M1006G	10	10	3/8	6.5	-	23.81	19.05	17.3	19.5	31.2	14.0	-	38.9	
UGC-M1008G	10	10	1/2	7.0	-	26.98	19.05	17.3	19.5	34.5	19.0	-	42.2	
UGC-M1204G	12	12	1/4	9.5	5.58	22.22	22.22	22.8	21.7	31.8	15.0	-	41.9	
UGC-M1206G	12	12	3/8	6.5	-	23.81	22.22	22.8	21.7	34.3	14.0	-	44.4	
UGC-M1208G	12	12	1/2	9.5	7.0	26.98	22.22	22.8	21.7	38.1	19.0	-	48.2	
UGC-M2008G	20	20	1/2	7.0	-	30.16	31.75	26.2	22.1	44.2	19.0	-	54.5	
UGC-M2208G	22	22	1/2	7.0	-	30.16	31.75	26.2	22.1	44.2	19.0	-	54.5	

Dimensions are for reference only and are subject to change without prior notice.  
E is minimum opening. F, G and L are typical finger tight.